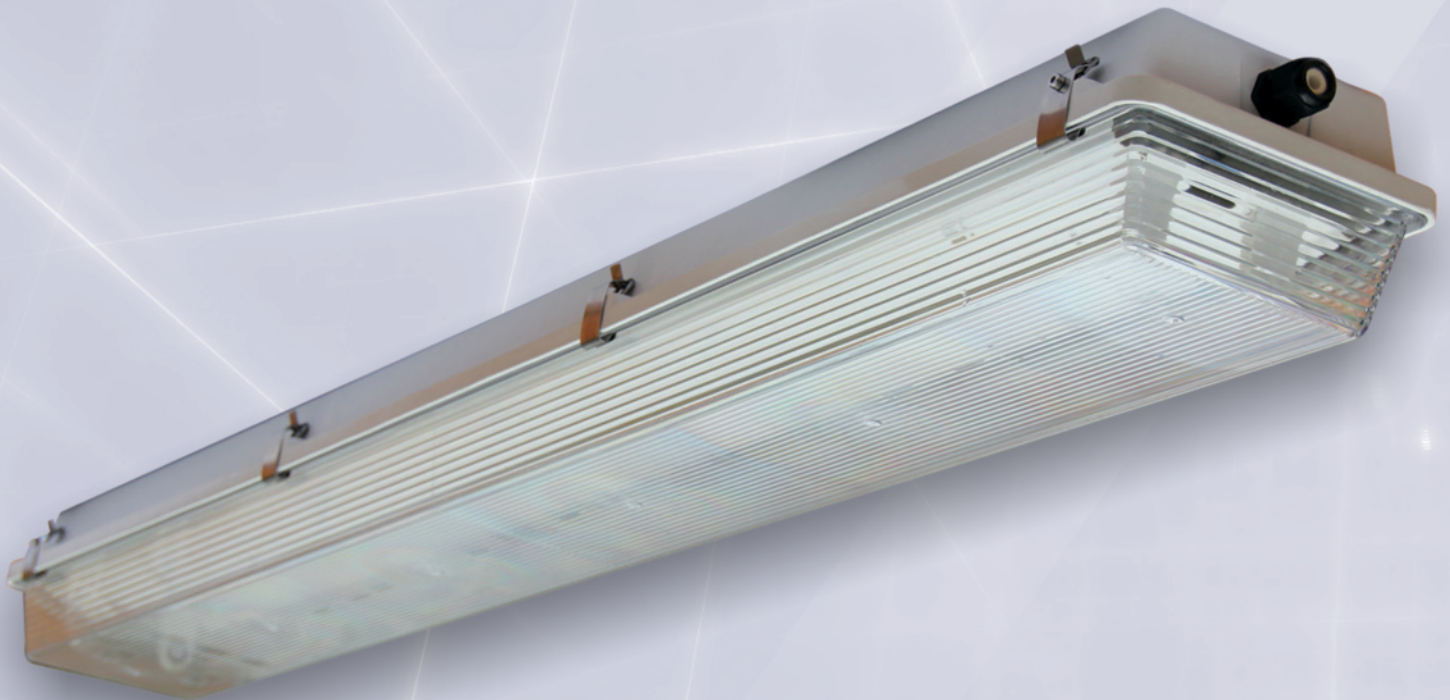




JBP - LT LED Exn

Zone 2, 21 & 22



The **JBP - LT LED Exn** linear luminaire range is a high-performance industrial luminaire for use in hazardous Zone 2, 21 & 22 locations, The luminaire is designed to replace the conventional fluorescent lamps which makes it energy efficient with high performance, low maintenance and longer life span. It's suitable for wall, ceiling, bracket and pole mounting. The **JBP - LT LED Exn** continues the proud heritage of RAMIKA PROJECTS Ex Safety Standards whilst utilizing the latest LED technology quality standards.



RAMIKA PROJECTS

JBP - LT LED Exn

Applications: Zone 2, 21 & 22 hazardous areas.

Body: Manufactured from DMC, compression moulded glass fibre reinforced polyester.

Clips: Double acting stainless steel clips.

Lens: Injection moulded clear polycarbonate lens with linear internal prisms.

Gasket: Silicone sponge gasket.

Control Gear: White epoxy coated gear tray carries the Ex LED tubes and lamp holders, and also acts as a reflector. Two cords allow the gear tray to be suspended from the body during installation and service. Ex LED tubes comply to Ex nA standards.

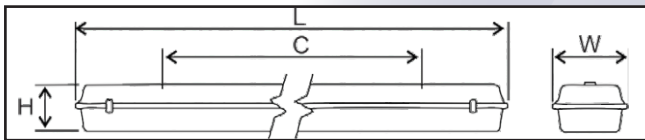
Lamps: Only G13 Bi-pin type Nordland Ex LED tubes are suitable for use.

The JBP-LT Exn utilizes an unique proprietary Nordland Exn LED tube, and therefore no other LED tubes will be allowed to be used. Only Nordland branded Exn LED Tubes will function in this Exn LED fitting.

Note: Lightning Protection: All electronic products such as light fittings and computers are subject to violent destruction when struck by lightning. An independent lightning protection device, well earthed, needs to be inserted in the supply line before the lighting circuit, where any electronic control gear is used in light fittings. Control gear LED tube damaged by lightning is not covered under guarantee.

Please Note:

Wired gear trays are available separately for all the below mentioned models.



Cable Entry: The Body has two 20mm entries. One is plugged and the other is fitted with a Ex n compression gland.

Mounting: Brass body inserts allows for hook, wall/ceiling brackets or pole clamps to be used.

Ambient Temperature Rating: -20°C - +40°C

Ingress Protection Grade: IP65

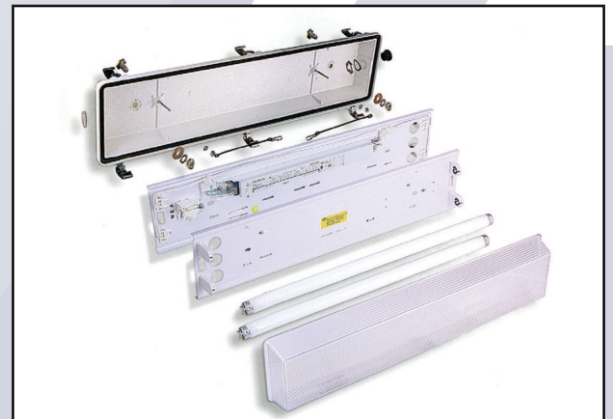
Photometric Data: Photometric files available on request.

Warranty: 1 Year. Only for use with Nordland LED tubes.

Ex-mark:

Exe nA IIC T4 Gc

Ex tb IIIC T135°C Db



Model Name	JBP-LT 1/4ft LED Exn 4ft (1200mm)	JBP-LT 2/4ft LED Exn 4ft (1200mm)	JBP-LT 1/5ft LED Exn 5ft (1500mm)	JBP-LT 2/5ft LED Exn 5ft (1500mm)
Rated Wattage(W)	1x18W T8 LED	2x18W T8 LED	1x24W T8 LED	2x24W T8 LED
Luminous Flux (system)	1800lm	3600lm	2400lm	4800lm
Luminous Efficacy (system)	100lm/W			
Colour Temperature	4500K			
Colour Rendering Index	>Ra82			
Rated Voltage	100V-240V AC, 50/60Hz			
Ambient Temperature	-20°C to +40°C			
Rated Lifetime	35 000 Hr.			
Installation	Wall, Ceiling, Bracket and Pole mounting			
Ingress Protection Grade	IP65			
Dimensions	L x W x H		L x W x H	
	1310x172x115mm		1610x172x115mm	
Fixing Centres (FC)	800mm		1100mm	
Weight	5Kg		7Kg	

Ramika Projects reserves the right to change any specification or design without prior notice.